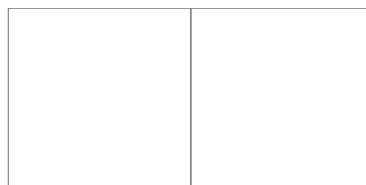
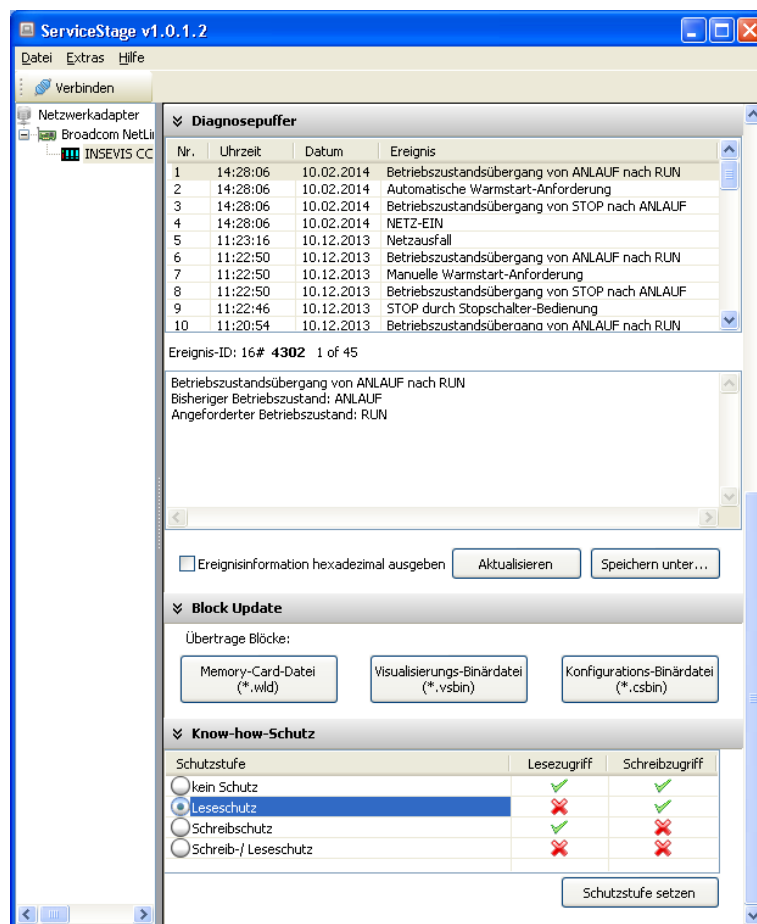


Product information

Maintenance software

ServiceStage



(valid from 02/2014)

Changes to older versions of this document

Changed in Rev. 1: complete new document from ServiceStage 1.0.1.2



The „ServiceStage“ is made to have easy service access to the PLCs. It allows to identify a S7-CPU by its IP-address and to analyze it by diagnostic buffer, to update the user-programs and to set the protection levels. This software is free of licenses, offers lots of service functions easily to be found even if you are not working every day with this software tool. Installed in a minute, useful service functions, absolutely easy to understand.

These functions can be solved with the **freeware** „ServiceStage“

- Device specific data like (ser-no., firmware version, IP-address, MAC-address, etc.),
- Change IP-address directly, Download firmware (for CPU-T-devices)
- Changing of the operation mode RUN ↔ STOP,
- Set and synchronize date and time,
- Memory diagnostic and comprimation,
- Read out, show and store CPU-diagnostic buffer,
- Download of S7-program (as wld-file), visualization- and configurations binary,
- Create backup files and directory on Micro-SD-card
- Assign the know-how-protection levels (Read and/or Write protection)

The protection levels of the „ServiceStage“ are secure, because they do not base on a pass word, what can be „hacked“. Only a hardware reset can delete this protection. Than only the owner of the source code can download the original S7-program again. A misuse is prevented by using the authentication with the pass word from Simatic®-Manager or TIA-Portal® when the protection level is assigned.

▼ **KNOW-HOW Protection**

Protection level	Read access	Write access
<input type="radio"/> No protection	✓	✓
<input checked="" type="radio"/> Read protection	✗	✓
<input type="radio"/> Write protection	✓	✗
<input type="radio"/> Read write protection	✗	✗

Set protection level

To get an access to the device choose the network adapter of your PC (This one, what makes the network access to the CPUs). Select one of the CPUs displayed in the left window and press „**Update**“.



The „**LCD-blink test**“ helps to identify the selected CPU. (yellow battery-LED blinks for 3 seconds). The use of this program is absolutely selfe explainable.

Copyright

This and all other documentation and software, supplied or hosted on INSEVIS web sites to download are copyrighted. Any duplicating of these data in any way without express approval by INSEVIS GmbH is not permitted. All property and copy rights of these documentation and software and every copy of it are reserved to INSEVIS GmbH.

Trade Marks

INSEVIS refers that all trade marks of particular companies used in own documentation are reserved trade marks are property of the particular owners and are subjected to common protection of trade marks.

Disclaimer

All technical details in this documentation were created by INSEVIS with highest diligence. Anyhow mistakes could not be excluded, so no responsibility is taken by INSEVIS for the complete correctness of this information. This documentation will reviewed regulary and necessary corrections will be done in next version.

With publication of this catalog all other versions are no longer valid.